



CASTLE POINT NEIGHBOURHOOD WATCH NEWSLETTER

WORKING IN PARTNERSHIP WITH ESSEX POLICE



NHW Administrative office:

Benfleet Police Station, 92 High Road, Benfleet, Essex. SS7 5LG

NHW Direct Dial: **01268 798127** Email: **julie.kirrage@essex.pnn.police.uk**

May Issue 2011

DIGITAL TV SWITCHOVER - TRADING STANDARDS WARNING

Trading Standards are warning residents to be vigilant against distraction burglars and rogue traders using the digital switchover to mislead and gain access into homes.

There is a Digital Help Scheme for those aged 75 or over, or receiving certain disability benefits, which offers help to convert one TV set in the home to digital. www.helpscheme.co.uk for more info or tel: 0800 40 85 900

Even if you're not eligible you can still protect yourself against rogue traders and tricksters by using a Buy With Confidence approved installer. This scheme is run by Essex County Council and Trading Standards, to find a local company approved in your area contact 08454 040506 or www.buywithconfidence.gov.uk. Installers from both the Digital Help Scheme and Buy With Confidence will never cold call and are Criminal Records Bureau checked.

Police Beat Surgeries

A chance to meet your local officers and discuss any problems you may have. These friendly get togethers are held monthly at venues around the Borough such as:

- ◆ Libraries
- ◆ Caf es and restaurants
- ◆ Churches
- ◆ Supermarkets
- ◆ Council offices
- ◆ Train station
- ◆ Community halls

Check the new police website for details of your local beat surgeries.

www.essex.police.uk

Congratulations to Sandy

Well done to our very own Sandy Miller who was commended in the Essex Neighbourhood Watch Co-ordinator of the Year Awards 2010. As well as looking after her own street Sandy regularly volunteers to help with road launches, distribution of newsletters and office administration to keep Castle Point going strong.



Useful phone numbers:

Neighbourhood Policing Team mobiles:

Canvey: 07791 680413 Benfleet, Hadleigh & Thundersley: 07791 680397

It Could Happen To You...

But advice from Essex County Fire & Rescue Service might make all the difference.

For information on how to receive Home Fire Safety advice or to see if you qualify for a FREE Home Fire Safety Visit please ring 0845 601 5495.



You can use these to discuss any local issues with your Neighbourhood Constable or PCSO 8am - 10pm. These numbers should not be used to report crimes and incidents, continue to report these via 999 (emergency) or 0300 333 4444 (non emergency)

Community Payback - how to get involved

In Essex nearly £2million worth of Community Payback work is provided to local communities, as offenders pay back for the crimes they have committed. Community Payback projects range from litter removal to clearing dense under growth; from environmental projects through to repairing and redecorating community centres or removing graffiti. Offenders usually work as part of a team, monitored by a supervisor.

To be considered your project must meet the following criteria:

- It must benefit the local community
- It must not take paid work away from others
- No one must make a profit from the work
- It must be challenging and demanding
- It must be worthwhile and constructive
- Offenders must be seen to be putting something back into the community

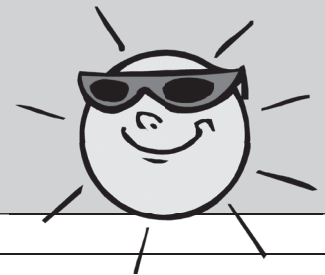
The Community Payback team will assess the project for suitability and for health and safety implications.

Anyone can nominate a project, so, if you are an individual, member of a club, community group, faith group or voluntary organisation and have a project that fits the criteria above, please call your local probation office 01702 337998 or see the Essex Probation website www.essexprobation.org.uk.

Community Service was first introduced in the 1970s but has come a long way since then. However, the key components are still the same. Offenders are required to give up their free time to undertake Unpaid Work within their local communities to pay back for the crimes they have committed. In most cases this equates to a day's work once a week.

Six Tips for a Safe Summer

1. Close and lock all accessible windows when you leave the room
2. Deadlock PVC-U doors on every occasion
3. Avoid leaving items attractive to thieves, particularly pedal cycles, in your garden
4. Padlock side gates to prevent entry to the vulnerable side and rear of your home.
5. Keep tools and other valuables locked in the shed or garage.
6. Do not leave the windows or sunroof of your vehicle open to "cool off" the interior of the vehicle.



Free Cycle Security Tagging

Canvey Island Police Station,
Long Road, Canvey Sunday 5th
June 10am - 2pm

Essex Police will be fitting individually coded electric tags in Castle Point resident's cycles, no need to book, just come along to Canvey Police Station. The tags are worth £15 each, so the number of tags on offer is limited

and will be fitted on a first come first served basis. Bike owners also receive a "cycle passport" with the code and a photograph of the bicycle. The individual code is registered on a national database, allowing police to identify any recovered bicycles and return them to their owners.

Castle Point Community Safety Partnership has funded the tags, so this opportunity to protect your property is only open to Castle Point residents.

Beware of thieves in ‘charity’ clothing

Police have issued a reminder to residents to exercise caution when donating unwanted clothing to charity via doorstep bag collections.



There are investigating reports of bags left out for genuine charities being taken ahead of official collections by bogus callers.

Residents should also be alert to the activities of bogus ‘charity’ collectors who distribute misleading leaflets which suggest the proceeds of a clothing collection will go to charity or charitable causes when in fact they benefit a private business or individual.

The Charity Commission, which registers and regulates charities in England and Wales, say they are aware of cases in which fraudsters have used the name, logo and registration number of genuine charities to appeal for clothing donations and keep the profits.

It’s important that people keep donating to genuine charities, say the Commission, who have issued the following advice to residents to ensure donations reach the right cause:

- Check for the words ‘registered charity’ on any leaflet or collection bag - don’t assume it’s a charity because of the pictures used.
- Look out for a registered charity number - and check the number against the Online Register of Charities.
- Call the charity - if it’s genuine the leaflet should include contact numbers, which you can call to ask if the charity really is collecting in your area.
- Call the Council - clothing collections that benefit a charity have to be licensed by the local authority.
- Go straight to the charity shop - if you’re still concerned about the leaflets you receive, leave your clothes at a charity shop or an official charity clothes collection point.

Arrive in style..... but in safety

With the School Prom season and summer events approaching, remember to be vigilant if hiring a stretch limousine or novelty vehicle as transport.

Novelty vehicles in particular are becoming increasingly popular. Students have been arriving at Proms in tanks, jeeps, fire engines, trikes, motorcycles, even plant hire vehicles from building sites.

The law requires all such vehicles to be properly licensed and not carry more than eight passengers, whatever the size of the vehicle. But there have been instances of unlicensed vehicles being offered for hire. As such, they are not subject to mechanical inspection, nor any other checks on their proprietors or drivers. Neither will an unlicensed vehicle be covered by the relevant ‘hire and reward’ insurance.

Before booking a vehicle for your special event always check that it is licensed. If in any doubt, contact the council’s licensing officers for advice at Castle Point Borough Council on 01268 882200 or email licensingunit@castlepoint.gov.uk.



It's a Dog's Life

A Day in the Life of PC Graham Nuth and Police Dog Eddie

My name is Graham Nuth and I have been a police officer for 10 years. My current role is a dog handler, which has always been an ambition.



Eddie is a three and half year old German Sheppard dog and is classed as a General Purpose Dog (GPD). He is also one of seven specialist Tactical Firearm Support (TFS) dogs. Eddie is trained to support armed officers at serious incidents. He has been trained in obedience, agility, tracking missing persons and suspects over various terrains,

and searching for missing persons or suspects that are hidden in or out of doors. He also searches for recently handled discarded property; he performs crowd control, chasing and detaining a fleeing person and detaining a threatening or aggressive suspect.

When off duty Eddie lives at home with my family, I have a wife, young son and a pet dog called Rosie. Eddie has his own kennel and run in the garden to allow him some peace and quiet after a hard day at work. Eddie enjoys long walks and socialises well with Rosie and they often play together. Being a dog handler is not just a job, but a lifestyle, and a large commitment.

We work various shifts including nights and a typical shift can include searching an area after a crime, patrolling, tracking suspects, custody procedures as well as training opportunities.

To read more about PC Nuth and Eddie on their night shift, visit www.castlepointcsp.org.uk and look on the news page.

Useful Phone Numbers

Police (non emergency)	0300 333 4444
Crimestoppers	0800 555111
Drugs helpline (Talk to Frank)	0800 776 6000
Alcoholics Anonymous	0845 769 7555
Domestic Violence Helpline	0808 200 0247
Consumer Direct/Trading Standards	0845 404 0506

Lock down the bike thefts

Bicycles are best locked away in a properly secured shed or garage when not in use. Unfortunately too many people are still taking a chance by leaving their bikes unsecured in the garden or propped up, unlocked, alongside the house at night.

Almost a third of bicycle thefts dealt with by local police involve bikes being taken from gardens.

This was preventable if only the owners had taken the trouble of storing their bike in a secure shed or garage. If this is not possible the next best alternative is to invest in a good quality lock and secure the bike to an immovable object, tucked far away from public view as possible.

Behave or be banned (BOBB)

Pubwatch has now expanded to cover the whole borough, promoting a safe, secure and responsibly led social drinking environment in licensed premises for both customers and staff. Affiliated pubs and clubs share information with each other about troublesome customers and known troublemakers. The BOBB scheme means that people causing persistent problems can be banned from all premises in the scheme.

Your NHW Co-ordinator is: